

# PRODUCT INFORMATION PACKET



Model No: C215K34FK1 A

Catalog No: 140695.00

10HP..3500RPM.215.TEFC.V.1PH.60HZ.CONT.NOT.40C.1.0SF.RIGID.GENERAL  
PURPOSE.C215K34FK1A

Totally Enclosed Fan Cooled (TEFC)



Regal and Leeson are trademarks of Regal Beloit Corporation or one of its affiliated companies.

©2018 Regal Beloit Corporation, All Rights Reserved. MC017097E



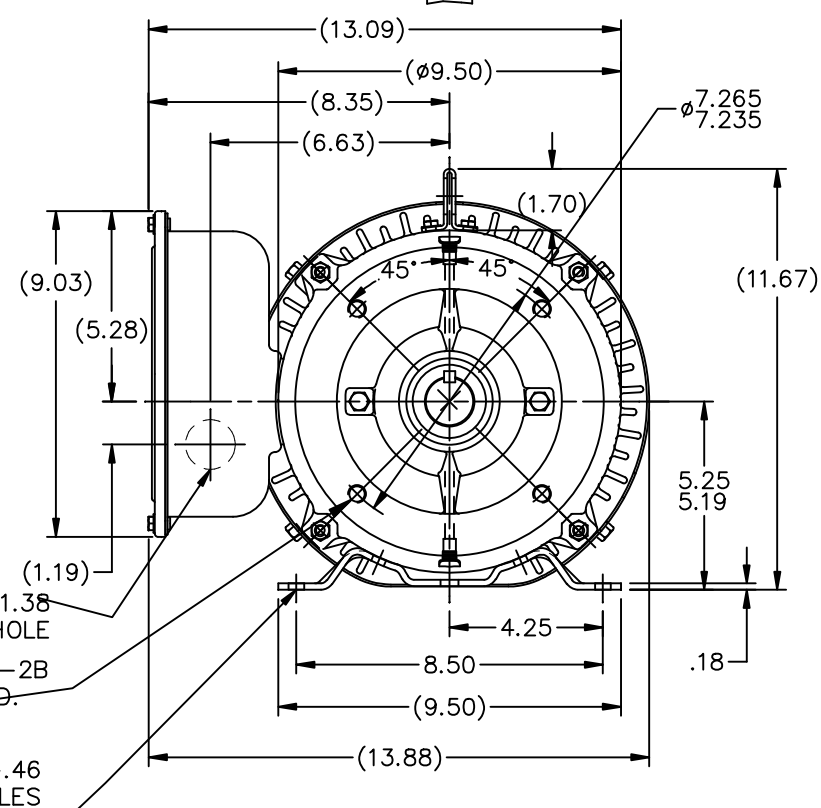
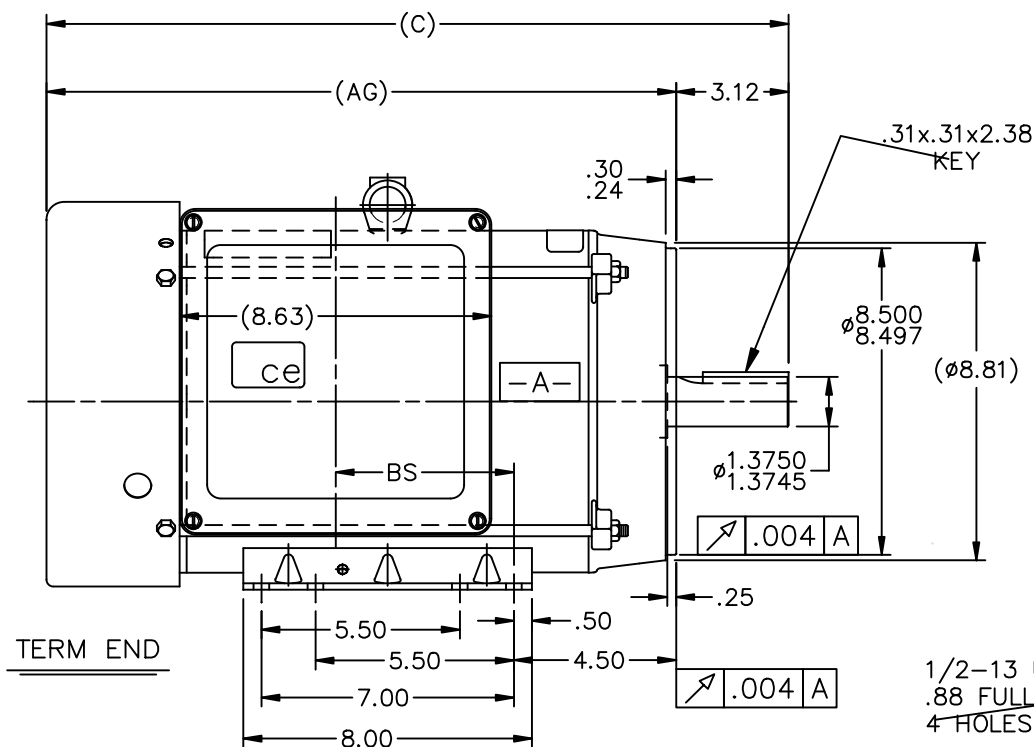
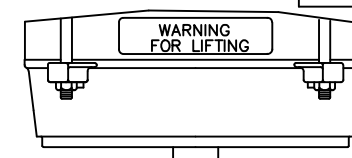


### Nameplate Specifications

Output HP	<b>10 Hp</b>	Output KW	<b>7.5 kW</b>
Frequency	<b>60 Hz</b>	Voltage	<b>208-230 V</b>
Current	<b>44.0-41.5 A</b>	Speed	<b>3500 rpm</b>
Service Factor	<b>1</b>	Phase	<b>1</b>
Efficiency	<b>85.5 %</b>	Duty	<b>Continuous</b>
Insulation Class	<b>F</b>	Design Code	<b>L</b>
KVA Code	<b>G</b>	Frame	<b>215TC</b>
Enclosure	<b>Totally Enclosed Fan Cooled</b>	Overload Protector	<b>No</b>
Ambient Temperature	<b>40 °C</b>	Drive End Bearing Size	<b>307</b>
Opp Drive End Bearing Size	<b>206</b>	UL	<b>Recognized</b>
CSA	<b>Y</b>	CE	<b>Y</b>
IP Code	<b>43</b>		

### Technical Specifications

Electrical Type	<b>Capacitor Start Capacitor Run</b>	Starting Method	<b>Across The Line</b>
Poles	<b>2</b>	Rotation	<b>Selective Counterclockwise</b>
Mounting	<b>Rigid base</b>	Motor Orientation	<b>HORIZONTAL</b>
Drive End Bearing	<b>BALL</b>	Opp Drive End Bearing	<b>BALL</b>
Frame Material	<b>Rolled Steel</b>	Shaft Type	<b>T</b>
Overall Length	<b>20.57 in</b>	Frame Length	<b>11.15 in</b>
Shaft Diameter	<b>1.375 in</b>	Shaft Extension	<b>3.38 in</b>
Assembly/Box Mounting	<b>F1 ONLY</b>		
Outline Drawing	<b>SS88690LE-1115</b>	Connection Diagram	<b>EE9048MF-LE</b>



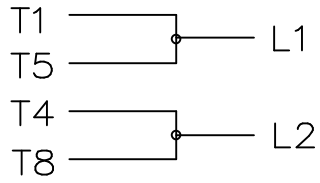
TERM END

- NOTES:  
 1. NAMEPLATE TO BE READ FROM C'BOX SIDE OF MOTOR.  
 2. DASH 965 TO BE READ FROM OPPOSITE SHAFT END

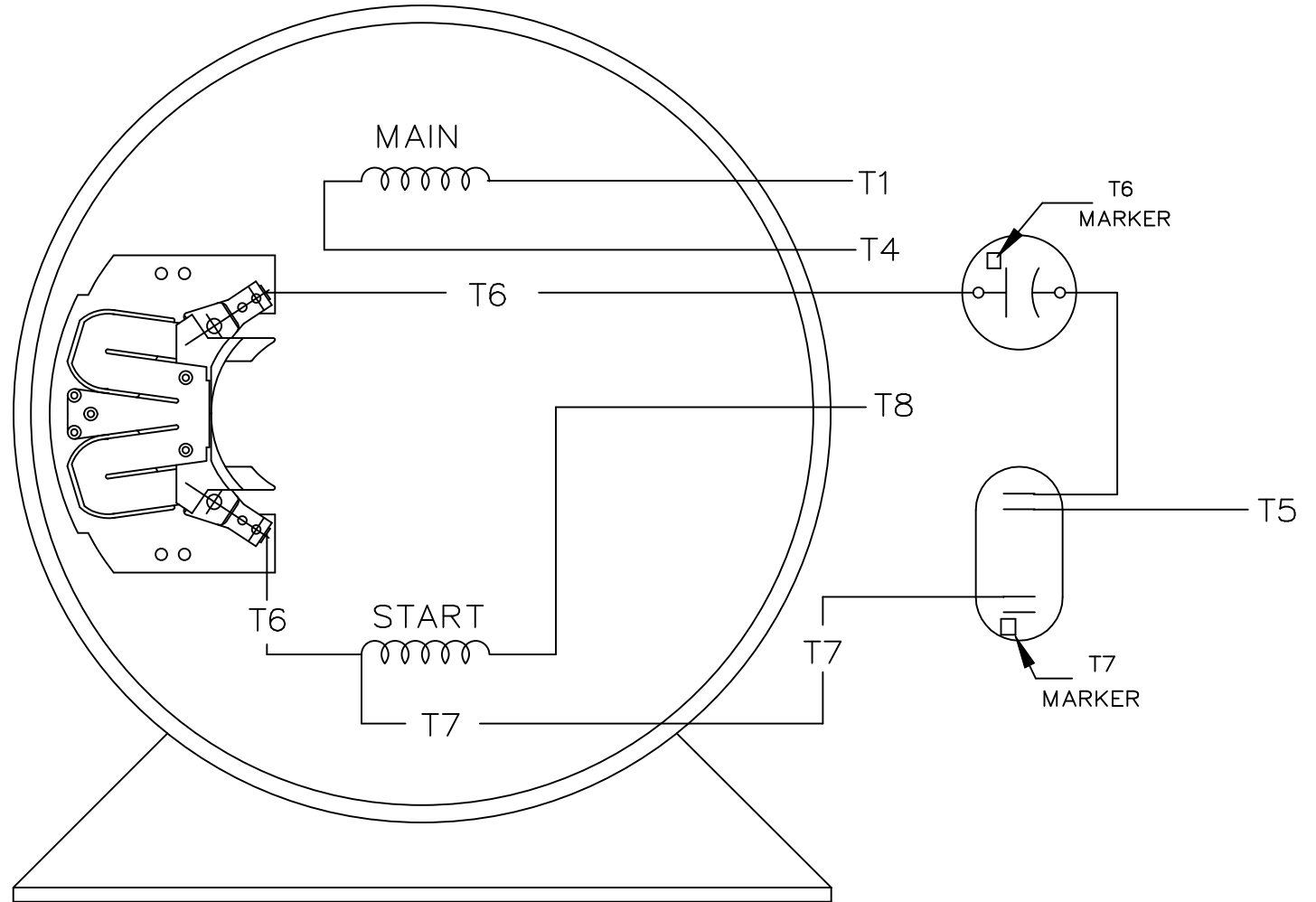
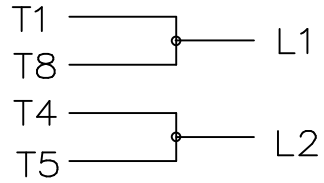
DASH	FR.	C	BS	AG
965	213T	19.07	3.44	15.95
1115	213/15T	20.57	4.94	17.45
1240	215T	21.82	6.19	18.70

				TOLERANCES UNLESS SPECIFIED		ELECTRIC MOTORS GEARMOTORS AND DRIVES	DRAWN RJM 07-26-2002			
				DEC.	INCHES		CHK ML 08-05-2002			
				.X	±.1		APPD JPL 08-02-2002			
				.XX	±.03	TITLE OUTLINE	SCALE 3=16			
2	ADDED NOTE 2 CN 31881	DRS 10-21-2002	ML	.XXX	±.005	210 FR. - TEFC - C'FACE - 1 PHASE	REF			
1	NEW DRAWING - DES/DEV	RJM 08-02-2002		.XXXX	±.0005	MAT'L.	FMF			
NO.	REVISION	BY & DATE	CHK	ANG	±7'30"	FINISH	PREV			
THIS DRAWING IN DESIGN AND DETAIL IS OUR PROPERTY AND MUST NOT BE USED EXCEPT IN CONNECTION WITH OUR WORK ALL RIGHTS OF DESIGN AND INVENTION ARE RESERVED THIS IS AN ELECTRONICALLY GENERATED DOCUMENT - DO NOT SCALE THIS PRINT				RFP		CAD FILE ss88690le	SIZE A	DRAWING NO. SS88690LE	PAGE OF	REV. 2
				DIST LB						

C.W. ROTATION




C.C.W. ROTATION



SINGLE VOLTAGE  
CAPACITOR START  
CAPACITOR RUN  
REVERSIBLE

VIEW OF TERMINAL END

				TOLERANCES UNLESS SPECIFIED		 ELECTRIC MOTORS GEARMOTORS AND DRIVES	DRAWN RJM 07-25-2002		
				DEC.	INCHES		CHK		
				.X	±.1		APPD		
				.XX	±.02		SCALE 1=1		
				.XXX	±.005		REF		
1	NEW DRAWING - DES/DEV	RJM		.XXXX	±.0005	MAT'L.	FMF		
NO.	REVISION	BY & DATE	CHK	ANG	±7'30"	FINISH	PREV		
THIS DRAWING IN DESIGN AND DETAIL IS OUR PROPERTY AND MUST NOT BE USED EXCEPT IN CONNECTION WITH OUR WORK ALL RIGHTS OF DESIGN AND INVENTION ARE RESERVED THIS IS AN ELECTRONICALLY GENERATED DOCUMENT - DO NOT SCALE THIS PRINT				RFP	CAD FILE EE9048MF-LE		SIZE	DRAWING NO. PAGE OF	REV.
				DIST LB			A	EE9048MF-LE	1



**LEESON ELECTRIC CORPORATION**  
 TYPICAL PERFORMANCE CURVE for AC MOTOR

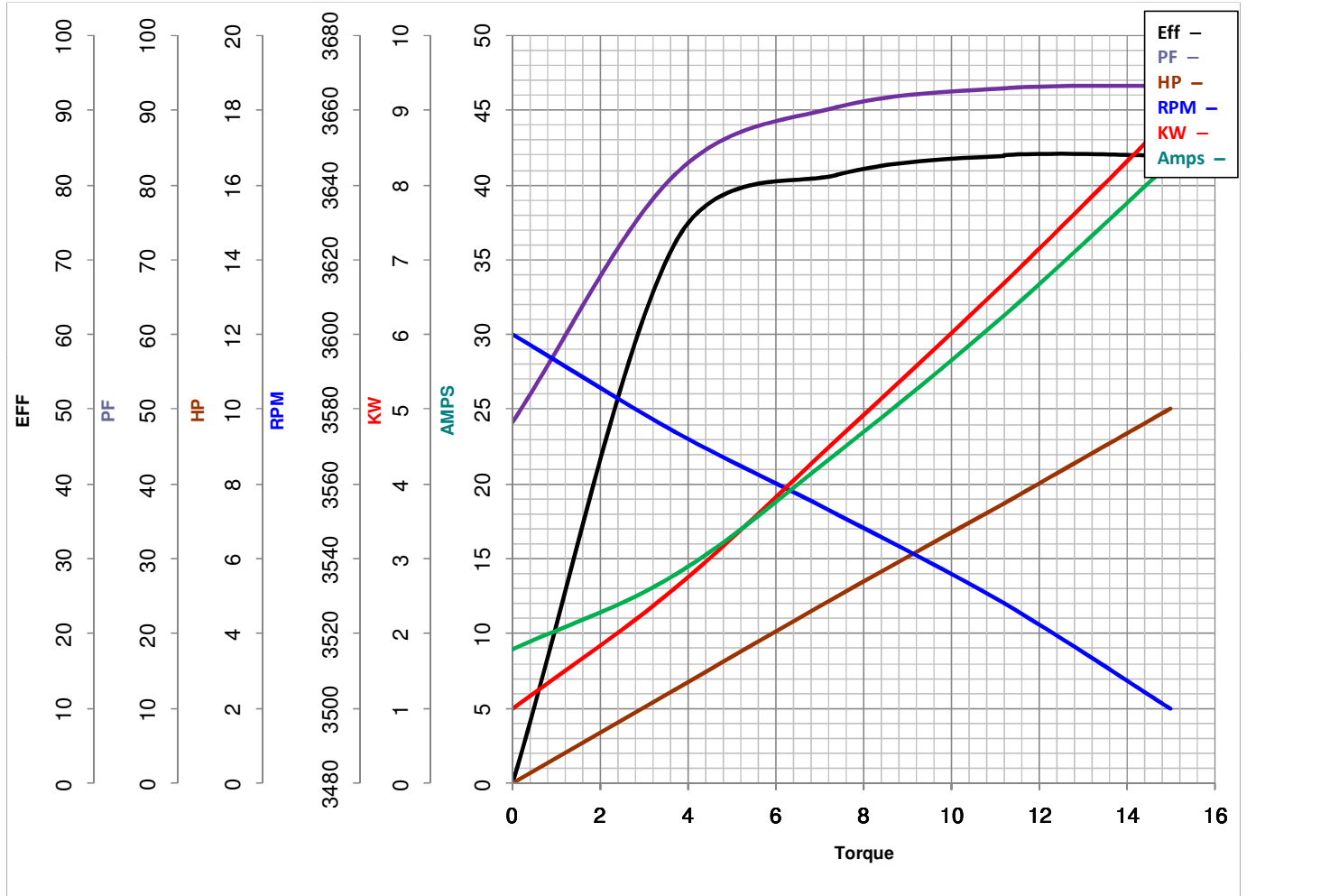
Curve at 230 Volts      HP 10.00      PHASE 1  
60 HZ  
10 HP      VOLTS 208-230

Model No 140695.00

Catalog No 140695.00

HZ 60

RPM 3500



Torque in Lb.Ft

FL TORQUE 15 Lb.Ft  
 BD TORQUE 38.5 Lb.Ft  
 LR TORQUE 26 Lb.Ft

FL AMPS 44-41.5  
 PU TORQUE 20.0 Lb.Ft  
 LR AMPS 249

WINDING BK10268-2

Date 3/21/2018